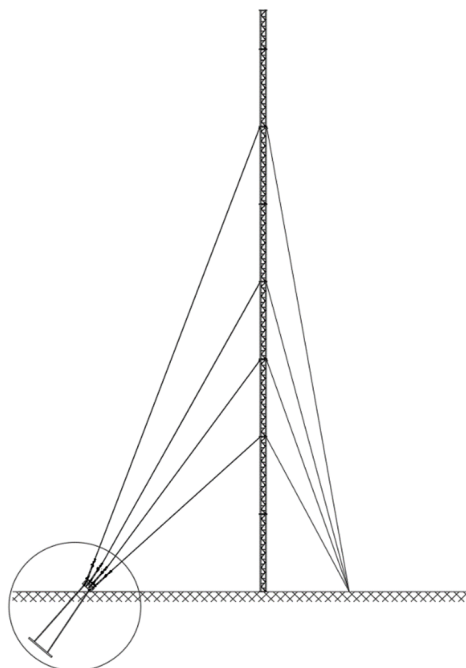


Anchor PL 20/2000/2000



The steel plate foundations are used as anchoring system of guy-wire towers for temporary tower deployment (approx. 5 – 10 years) period.

The plate foundations are available for immediate use – no curing, no settling is needed.

Wires and anchorage system must be chosen separately.

Specification:

“Dig Down” foundation steel plate

Steel grade: S355, Hot-dip galvanized, EN ISO 1461

Dimensions: thickness/width/length [mm] – 20/2000/2000

Partial safety factor: $\gamma_{M0}=1.1$

Standards used: DS/EN 1993-1-1 (Steel structures), EN 1991-1-4 (Wind load), EN 1997 (Geotechnical design).

Soil parameters:

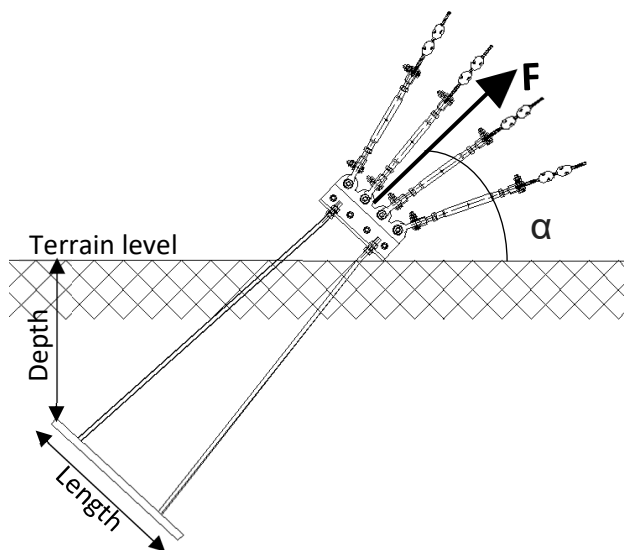
Good soil density is taken as 18 kN/m³

Bad soil density is taken as 15 kN/m³

High GWL – GWL at terrain

Low GWL – GWL below steel plate

Note: GWL - Ground Water Level



Application:

The graph below is used to determine the necessary depth of the anchor plate, to resist a maximum force F at a mean angle, $40 \leq \alpha \leq 60$.

(E.g. in case of Good soil - low GWL, $F= 126 \text{ kN}$, \Rightarrow min. depth = 1500 mm)

